

# In een groen, groen knollenland

♩ 150

Musical staff 1 (measures 1-7):  
3 3 4 5 5 5 6 5 \*4 5 \*3  
3 3 4 4 4 4 4 4 4 4

Musical staff 2 (measures 8-15):  
4 4 C 4 \*3 4 \*2 3 4 5 5  
3 3 \*2 3 3 2 3 4 4 4

Musical staff 3 (measures 16-24):  
5 3 4 5 5 5 6 5 \*4 5 \*3 4  
4 3 3 4 4 4 4 4 \*3 4 3 3

Musical staff 4 (measures 25-32):  
4 4 5 4 3 2 3 3  
3 3 4 3 2 2 2 2

Musical staff 5 (measures 33-40):  
3 3 4 4 3 \*2 3 \*2 4 5  
2 2 3 3 2 2 3 3 4 4

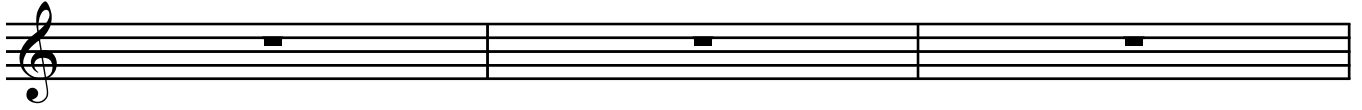
Musical staff 6 (measures 41-48):  
4 4 4 3 4 5 5 5  
3 3 3 2 3 4 4 4 4

Musical staff 7 (measures 49-56):  
3 4 5 C C 6 5 \*4 5 \*3 4  
3 4 \*3 \*3 4 4 \*3 4 3 3

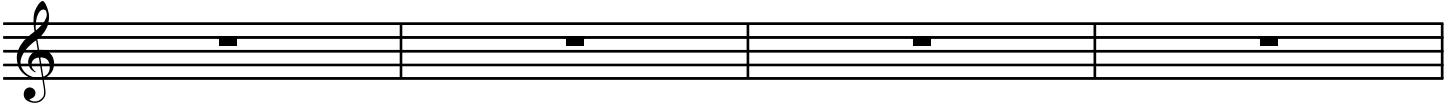
Musical staff 8 (measures 57-64):  
4 5 4 3 2 3 3 3  
3 4 3 2 2 2 2 2



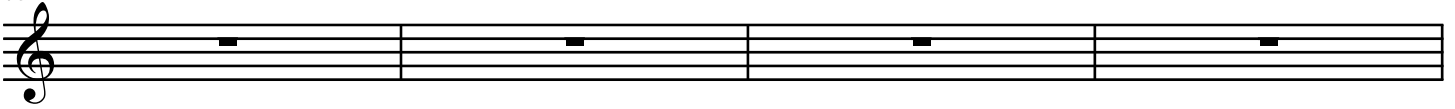
66



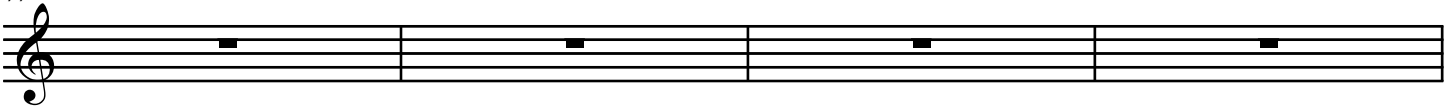
69



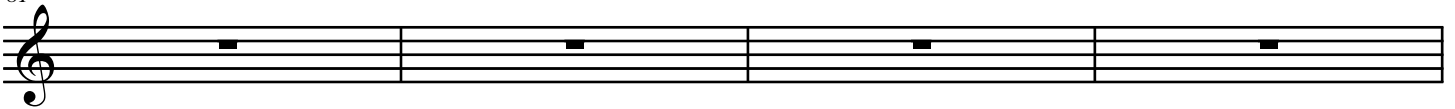
73



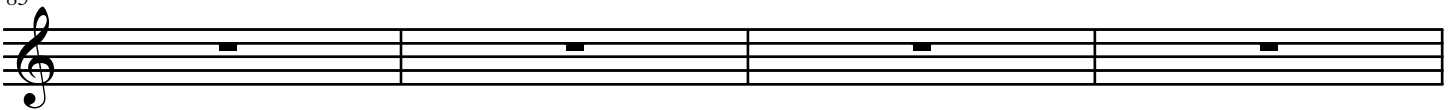
77



81



85



89



93

